

NEW CONSTRUCTION in BRIDGECREEK

Sylvania Twp. - South Side of Sylvania Ave., Just West of Mitchaw



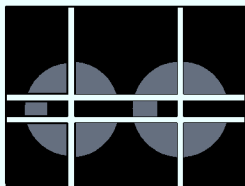
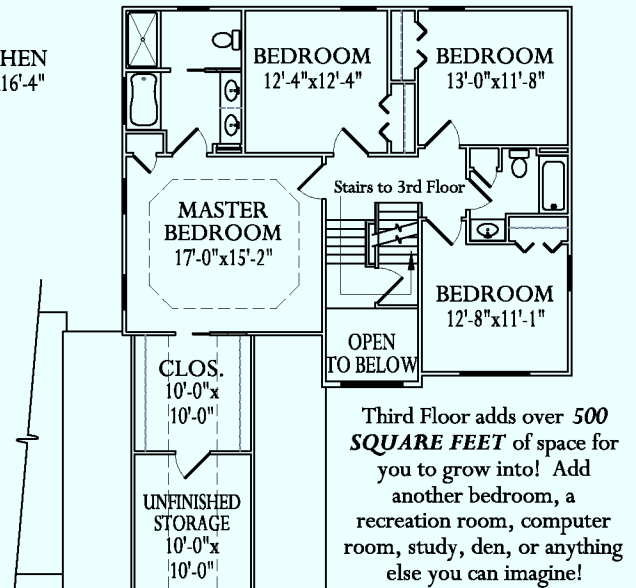
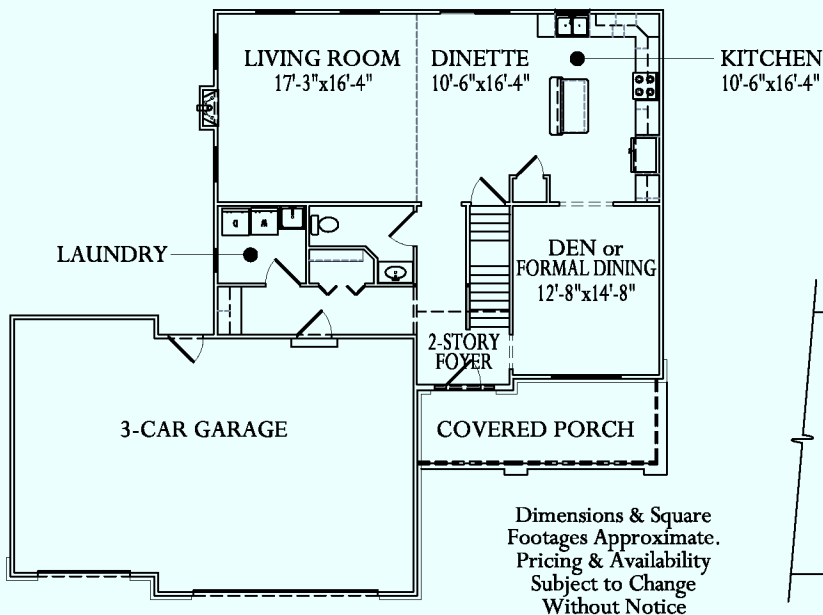
Lot #21, Bridgecreek
9259 North Pond Ct.

SOLD!

Will Duplicate - Call for Pricing

- 2385 Square Feet ±
Partially-Finished Third Floor Adds over 500 square feet of future living space! Drywall, Electrical/TV/Phone Outlets and Roughed-In Bathroom Included... this home has the potential for a total of over 2900 SQUARE FEET OF LIVING SPACE!
- Four Bedrooms +
- 2½ Baths (+ Rough-Ins for Third Floor & Basement!)
- Award-Winning Simonton Windows
Energy Star Rated!
Low-E Glass with Argon
- Fully Landscaped
- Gas Fireplace
- Full Basement
- Three-Car Attached Garage
- 9-Foot Ceilings on First Floor
- Open Floor Plan
- Stainless Steel GE Appliances
- Maple Cabinets
- Owens-Corning 30-Year Shingles
- High-Efficiency Gas Furnace
- 13-SEER Central Air Conditioning
- SYLVANIA SCHOOLS

BRIDGECREEK offers quiet country living that's convenient to shopping, entertainment, recreation and schools. Enjoy a prime location just moments from downtown Sylvania, Expressway Access, Pacesetter Park, Fossil Park, Sylvan Prairie Park, Quarry Ridge Bike Trail and much, much more!



CUMBERLAND CONSTRUCTION CORP.

Engineers / Constructors

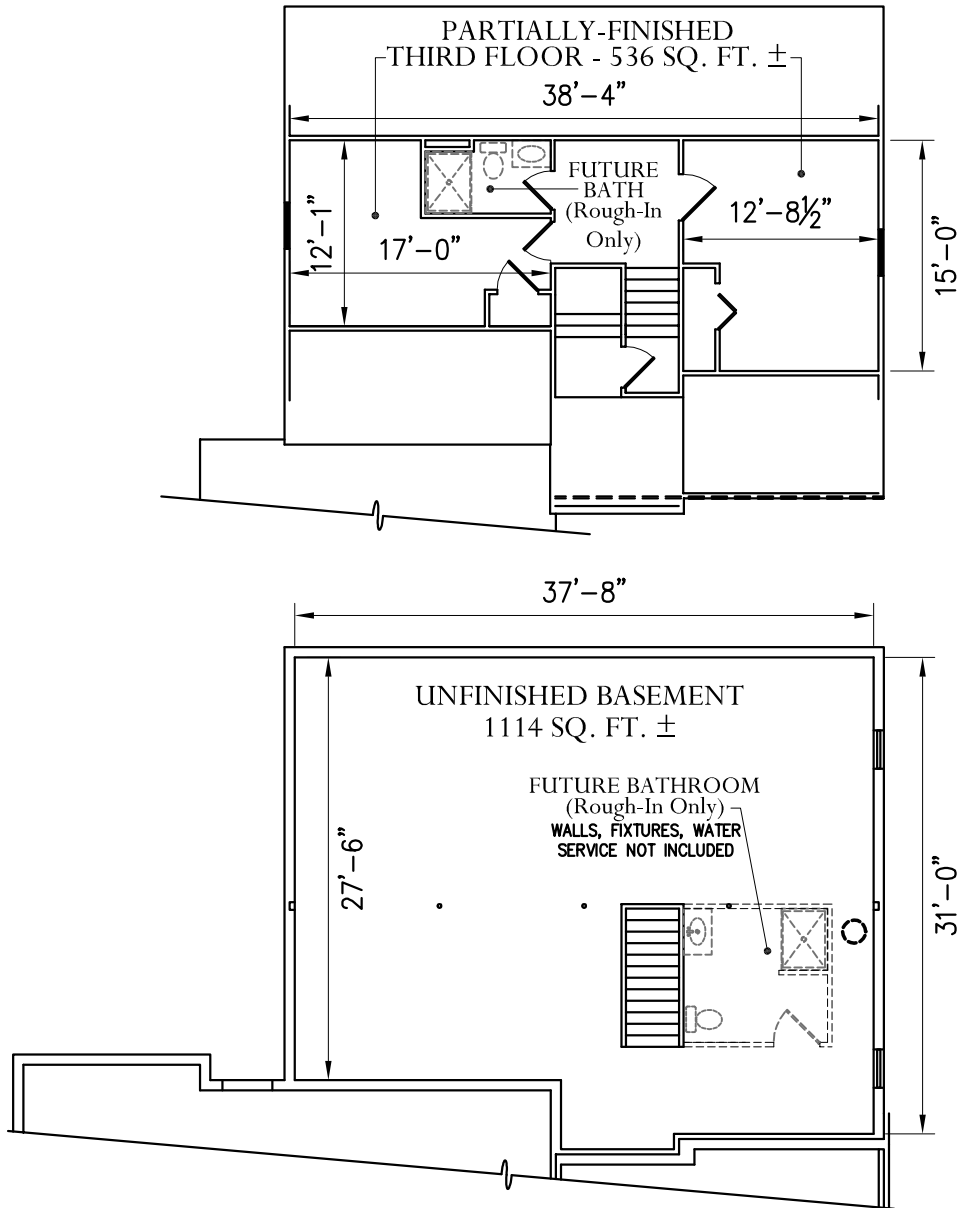
2727 N. Holland Sylvania Rd., Ste C Toledo, OH 43615

(419) 535-5697 Ext. 2 - Weekdays

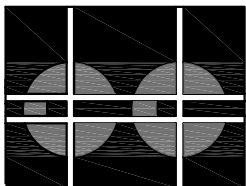
www.CumberlandConstruction.com

Member of the
HOME BUILDERS
ASSOCIATION OF
GREATER
TOLEDO

9259 North Pond Ct. Third Floor & Basement



Dimensions & Square Footages Approximate. Pricing & Availability Subject to Change Without Notice



CUMBERLAND CONSTRUCTION CORP.
 Engineers / Constructors
 2727 N. Holland Sylvania Rd., Ste C Toledo, OH 43615
 (419) 535-5697 Ext. 2 - Weekdays
www.CumberlandConstruction.com

Member of the
 HOME BUILDERS
 ASSOCIATION OF
 GREATER
 TOLEDO