

# 10 Park Place of Sylvania

Lot Availability as of July, 2011

For More Information, Contact the Park Place Sales Associate

(419) 535-5697  
Excursion 2

Call to Confirm the Latest Availability Information

## KEY

- AVAILABLE
- SOLD
- RESERVED
- MODEL FOR SALE

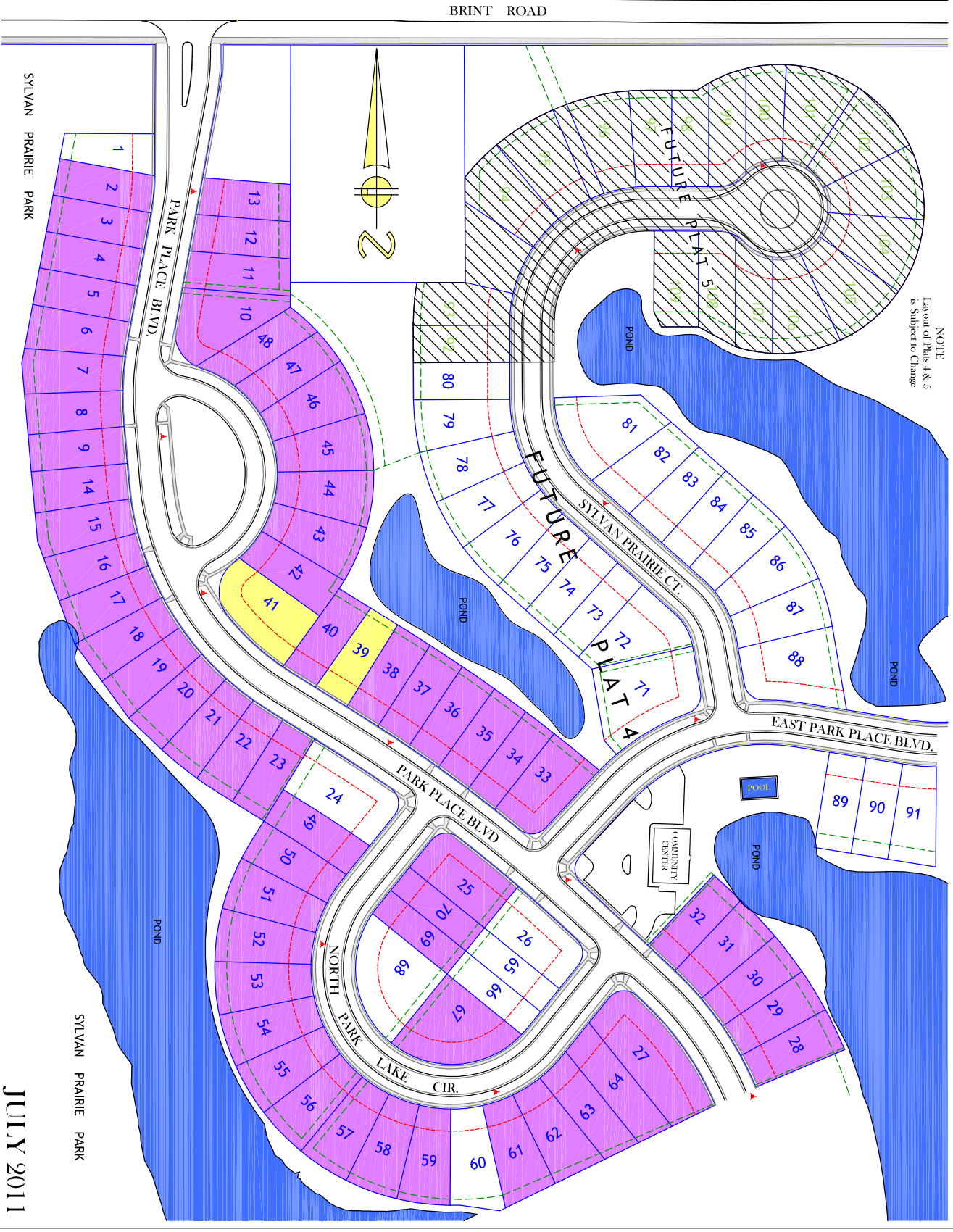
Building Setback Line

Drainage Easement

Lot Prices & Availability Subject to Change Without Notice

All Lots Subject to Other Easements and Restrictions of Record

NOTE: Layout of Plots 4 & 5 is Subject to Change



JULY 2011